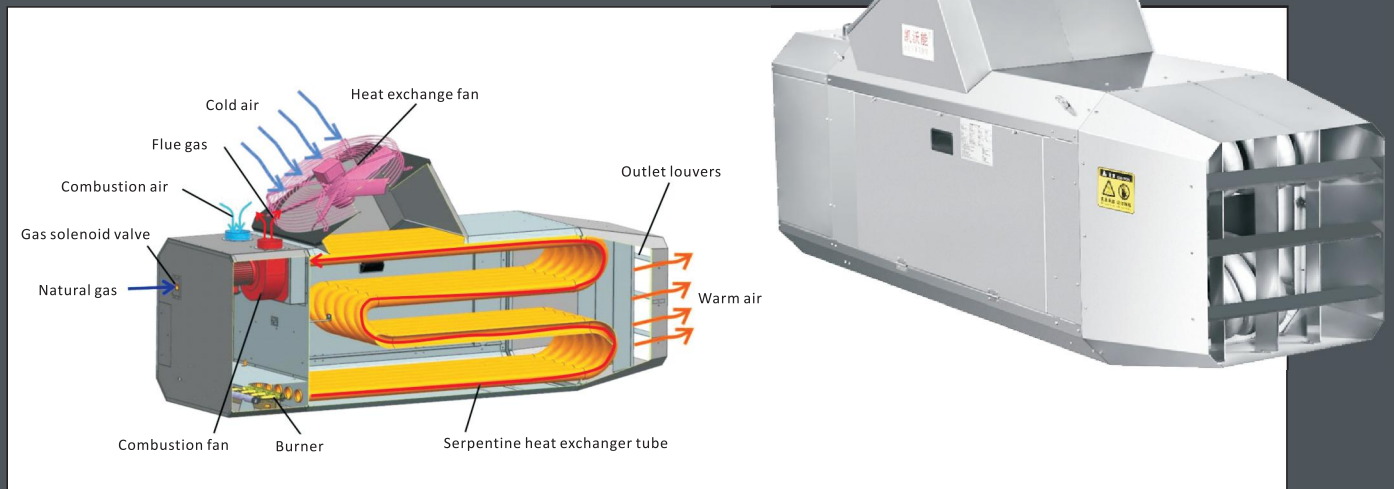


## KWIH Poultry House Indirect-fired Tubular Warm Air Heater



### HOW IT WORKS

Indirect-fired tubular warm air heaters are independent devices used to heat specific spaces. Typically, these devices include a heat exchanger, and a circulating fan blows air over the surface of the heat exchanger, circulating and heating the air.

### Advantages/Benefits

- Flue gas is discharged externally, eliminating carbon dioxide, moisture, and incomplete combustion products inside the house.
- Compared to direct-fired heaters, it can reduce ventilation rates, achieving an average energy saving of around 23%.
- The poultry house is drier, and the birds are more lively, resulting in a lower mortality rate.
- Convenient to use and easy to clean.
- Stainless steel casing for corrosion resistance.

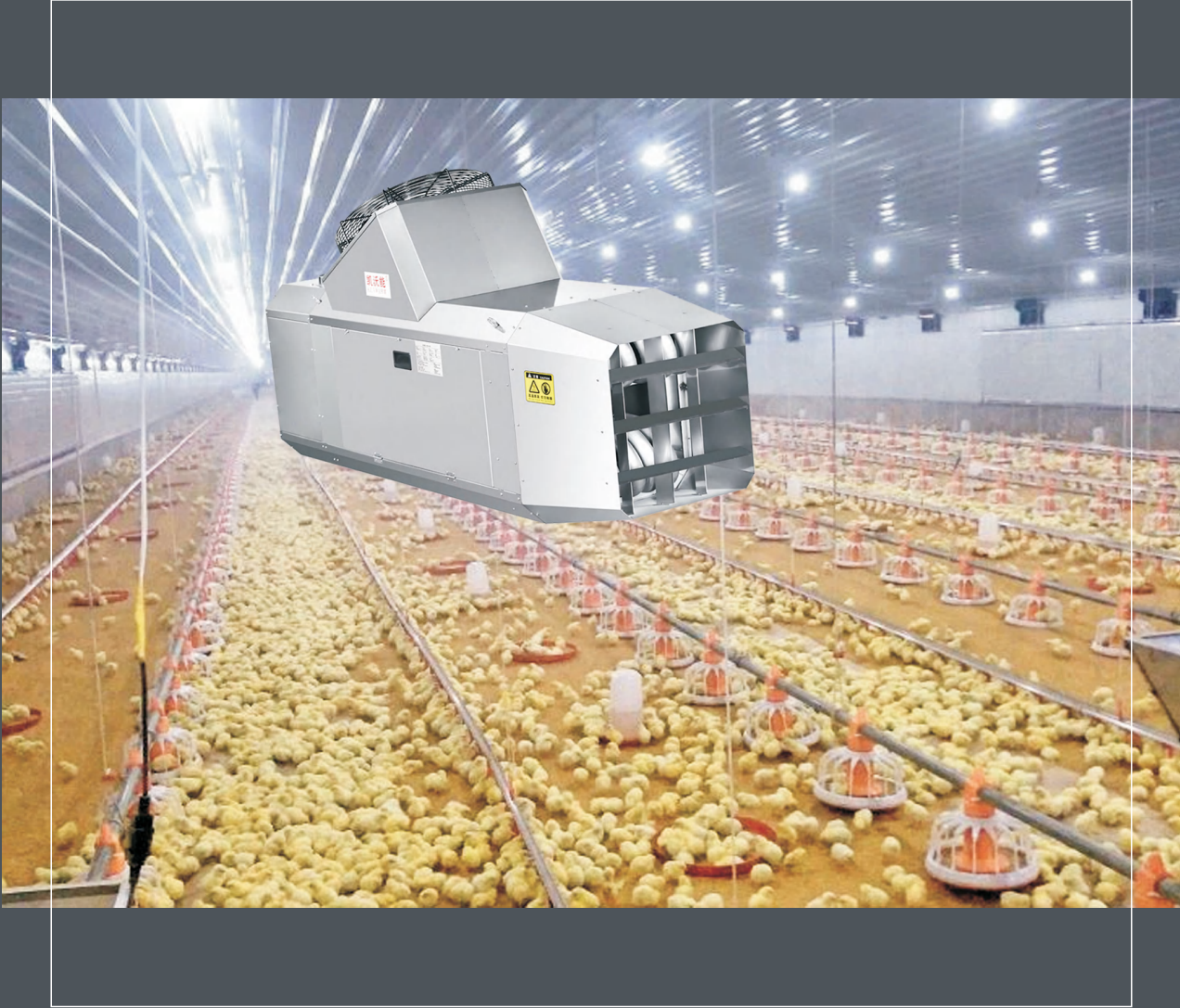
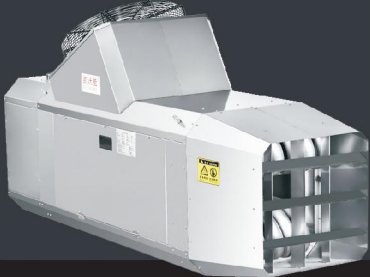
### Features

- Natural gas or propane, 60/80/100kW
- Inshot combustion burner, low CO and NOx emissions
- Enclosed combustion system, specifically designed for poultry houses
- Aluminized steel tube heat exchanger, stainless steel heat exchanger optional
- Multiple safety protections: flameout protection, fan failure protection, overheating protection
- Potted DSI ignition controller, moisture and corrosion-resistant
- Combination gas valve, 100% secure shut-off
- Washable design and structure

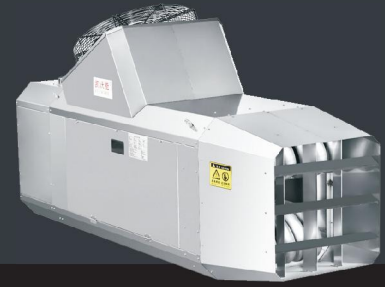
### Applications

- Specifically designed for chicken and duck houses.

# KWIH Poultry House Indirect-fired Tubular Warm Air Heater



# KWIH Poultry House Indirect-fired Tubular Warm Air Heater



## Technical Parameter

Model	KWIH60N	KWIH60P	KWIH80N	KWIH80P	KWIH100N	KWIH100P
Output power	60kW		80kW		100kW	
Hot air flow	6,000m <sup>3</sup> /h		8,000m <sup>3</sup> /h		10,000m <sup>3</sup> /h	
Combustion fan power supply	220V, 50Hz, 120W		220V, 50Hz, 120W		220V, 50Hz, 240W	
Circulating fan power supply	380V, 50Hz, 500W		380V, 50Hz, 650W		380V, 50Hz, 750W	
Type of gas	Natural gas	Propane	Natural gas	Propane	Natural gas	Propane
Gas supply pressure	2.0kPa	2.8kPa	2.0kPa	2.8kPa	2.0kPa	2.8kPa
Gas consumption	5.80m <sup>3</sup> /h	4.69kg/h	7.73m <sup>3</sup> /h	6.25kg/h	9.66m <sup>3</sup> /h	7.82kg/h
DimensionsHxWxL	1,050x650x2,000mm		1,050x650x2,000mm		1,050x815x2,000mm	
Weight	140kg		150kg		170kg	

1. Natural gas calorific value based on 8,900 kcal/Nm<sup>3</sup>, propane calorific value based on 11,000 kcal/kg.
2. Product specifications are subject to actual conditions for continuous improvement.

## Typical Installation Layout

